

Quick guide for importing

Elos Accurate[®] Library

exocad

Elos Accurate[®] Library

Content:

- | | |
|--|---|
| ▪ Download the latest Elos Accurate [®] Library | 2 |
| ▪ Before installing new libraries | 3 |
| ▪ Importing the Elos Accurate [®] Library in to exocad | 5 |
| ▪ Importing the Elos Accurate [®] Model Analog Library in to exocad | 7 |

Elos Accurate® Library

Download the latest Elos Accurate® Library

To download the latest Elos Accurate® Library, visit the Elos Accurate web site at the following link <https://elosdental.com/support-training/libraries/>

By signing up for the Elos Accurate newsletter you will always be informed about new Elos Accurate® Library releases. Sign up at <http://elosdental.com/>.

The Elos Accurate® Library offers a complete digital open workflow solution for Desktop or Intra Oral scanning.

The Elos Accurate libraries are divided into groups making it easy to download the relevant library or all.

Elos Accurate - Hybrid Base Non-Engaging: Contains prefabricated components with a titanium interface towards the implant with engaging interface. It is used for screw-retained bar or bridge constructions.

Elos Accurate - Hybrid Base Engaging: Contains prefabricated components with a titanium interface towards the implant with engaging interface. It is used for screwed single or small cemented bridge restorations.

Elos Accurate - Custom Abutment: Is used for milled single abutments using the Elos Pre-milled Abutments.

Elos Accurate - Custom Bar Bridge: Is used for creating a bar or bridge in one piece and includes the interface geometries.

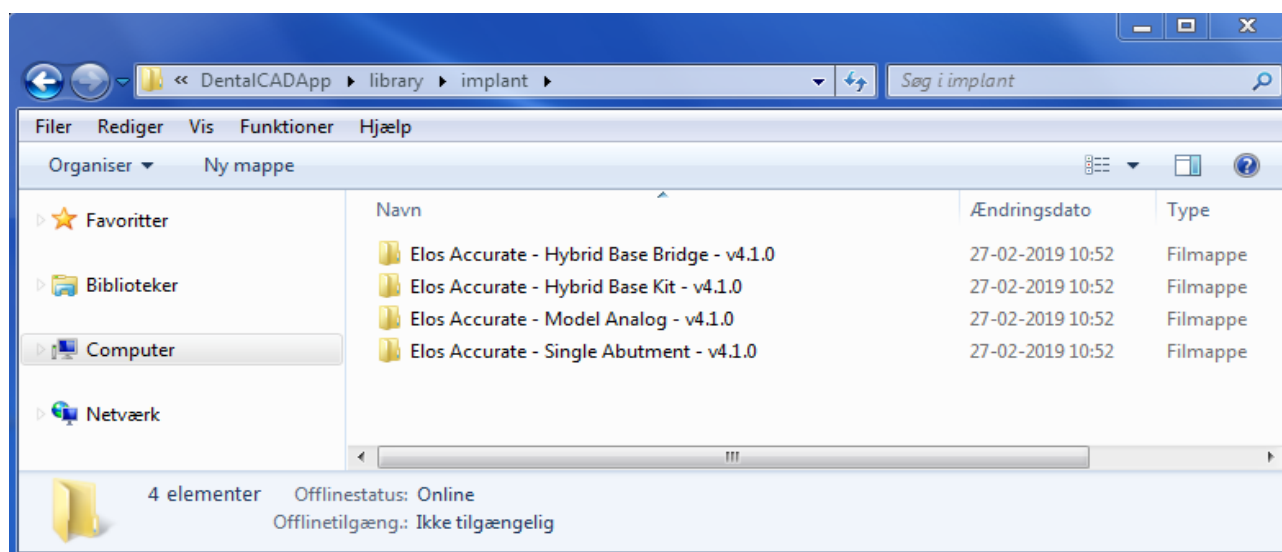
Elos Accurate - Model Analogs: Are used for creating a digital model.



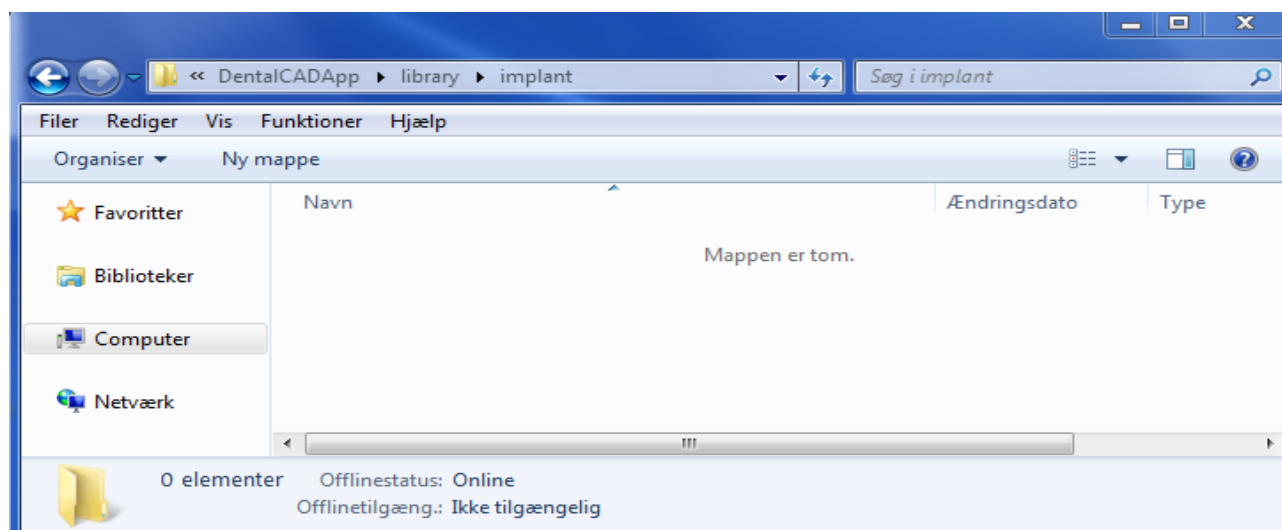
Elos Accurate® Library

Before installing new libraries

We recommend to always removing old libraries before installation of the new Elos Accurate Library. If this is the first time an Elos Accurate Library is installed, you can proceed to the next chapter. To remove libraries from exocad you need to open the folder where the exocad software is installed on the computer. Open the folder **“exocad-DentalCAD\DentalCADApp\library\implant”** and delete the already installed Elos Accurate libraries.

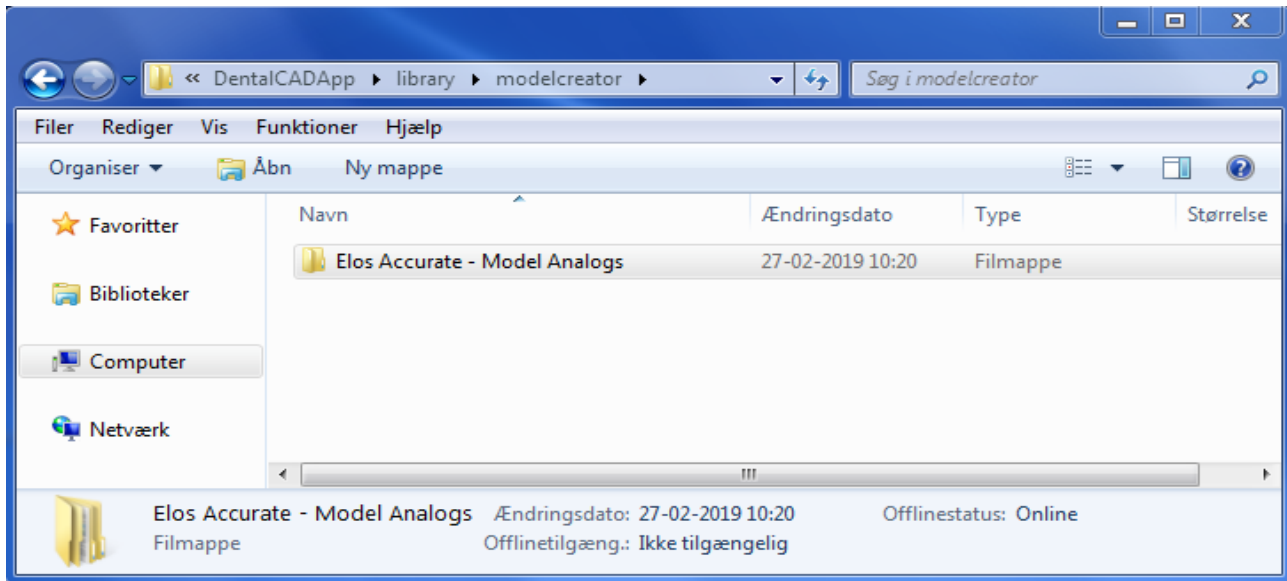


Mark all folders beginning with **“ELOS Accurate”** and delete.

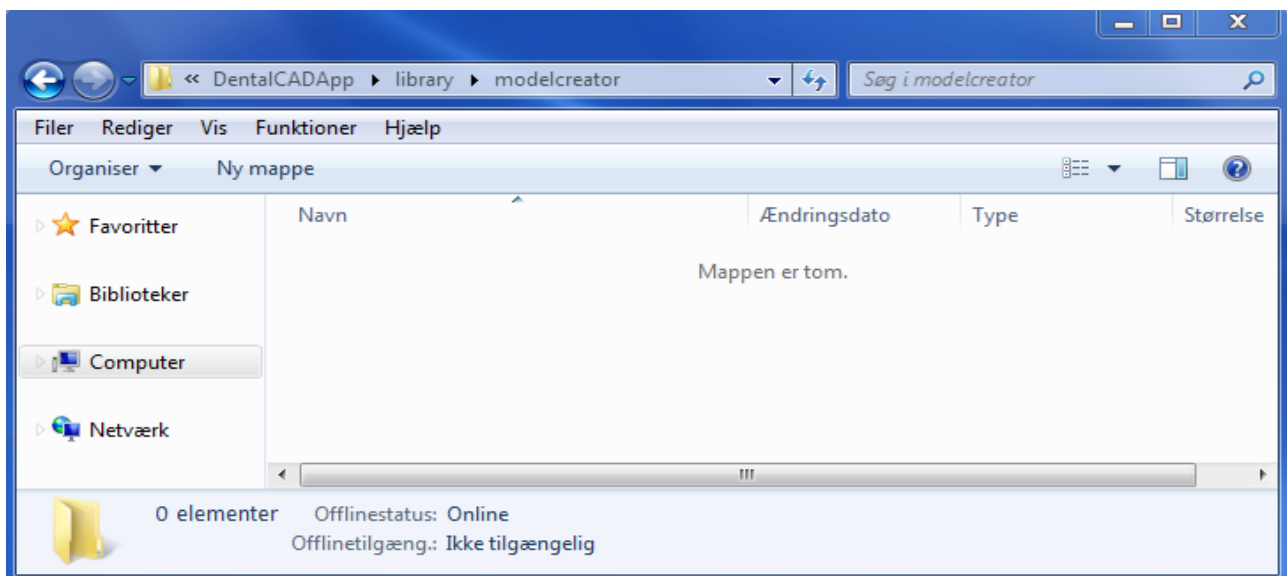


Elos Accurate® Library

The same is necessary for the Model Analog Library in the Model Creator folder. Go to folder “**exocad-DentalCAD\DentalCADApp\library\modelcreator\implants**”.



Delete the folder called “**ELOS_Accurate-LabAnalogs**”



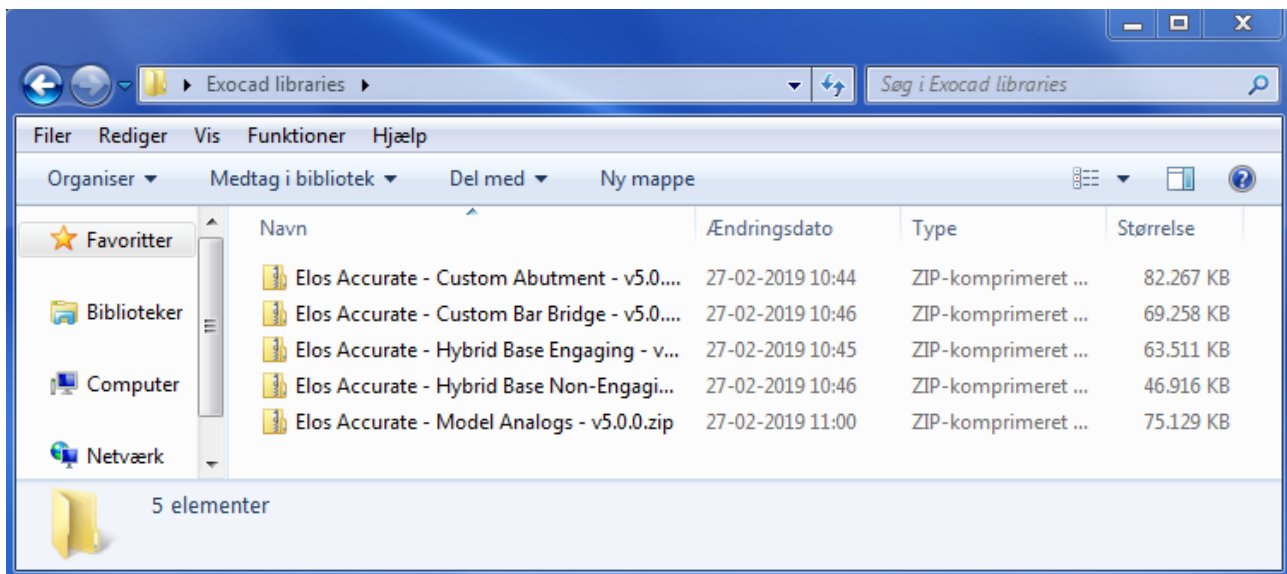
Now all old Elos Accurate libraries have been removed and the new libraries can be installed.

Elos Accurate® Library

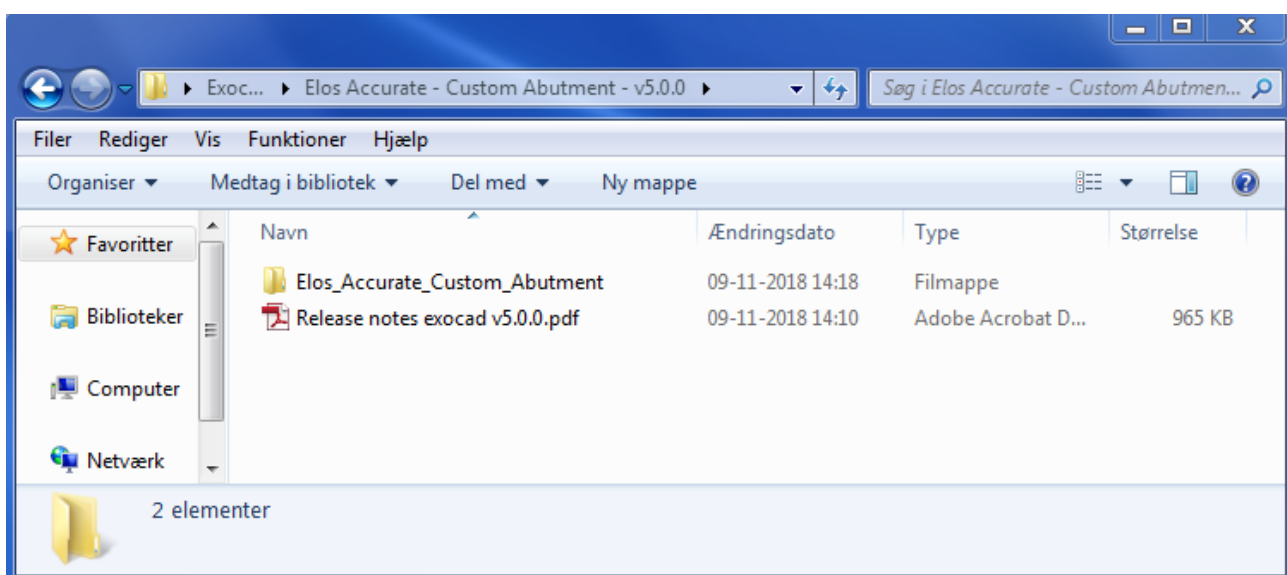
Importing the Elos Accurate® Library in to exocad

To install libraries in Exocad we need to copy the downloaded libraries into the **“exocad-DentalCAD\DentalCADApp\library\implant”** folder.

Locate the downloaded libraries.

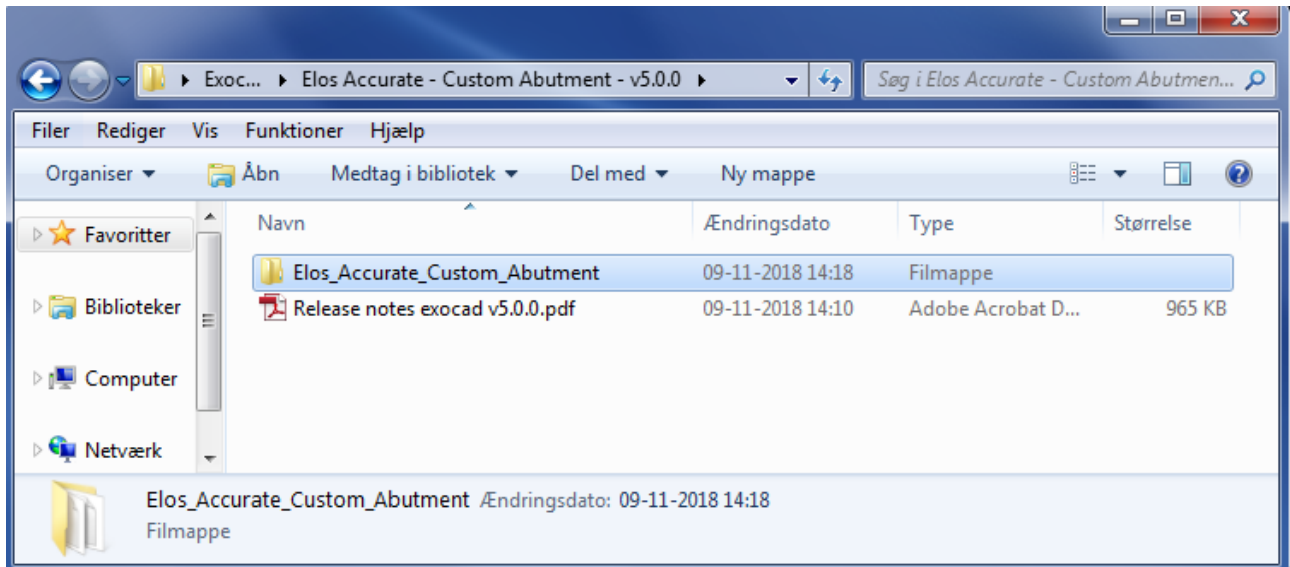


Unzip the folders to access the libraries. Start with reading the attached Release Notes.

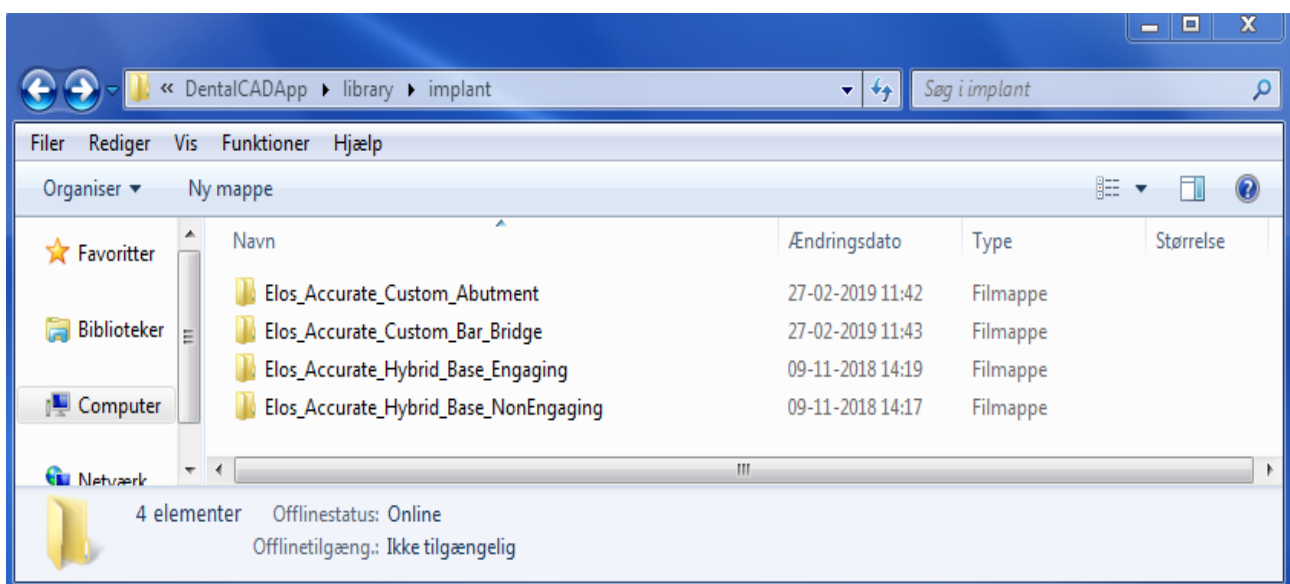


Elos Accurate® Library

Mark and copy the libraries folders.



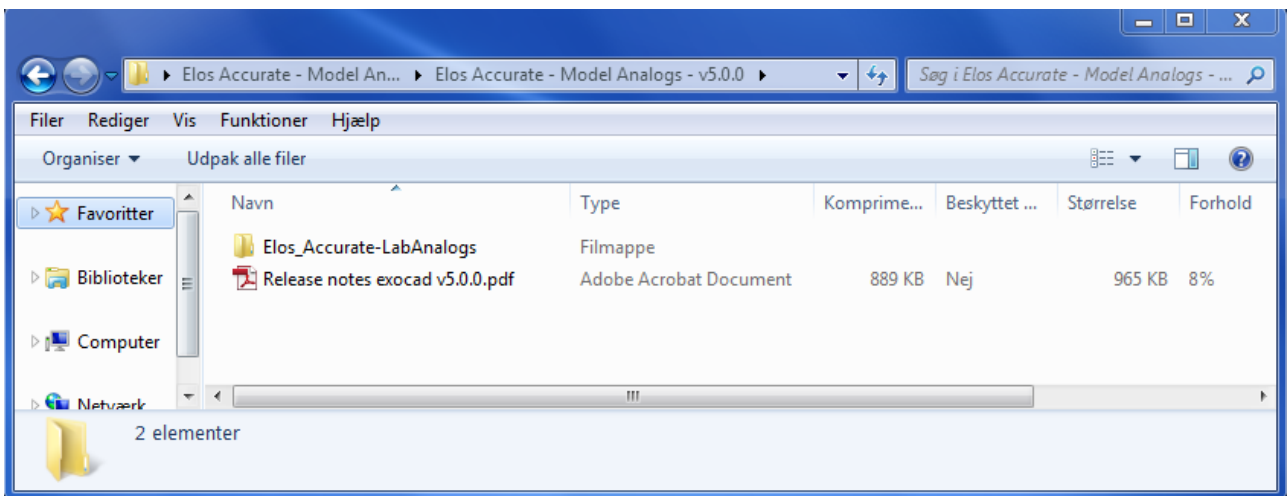
Paste the copied folders into the “**exocad-DentalCAD\DentalCADApp\library\implant**” folder and repeat the process for all the desired libraries.



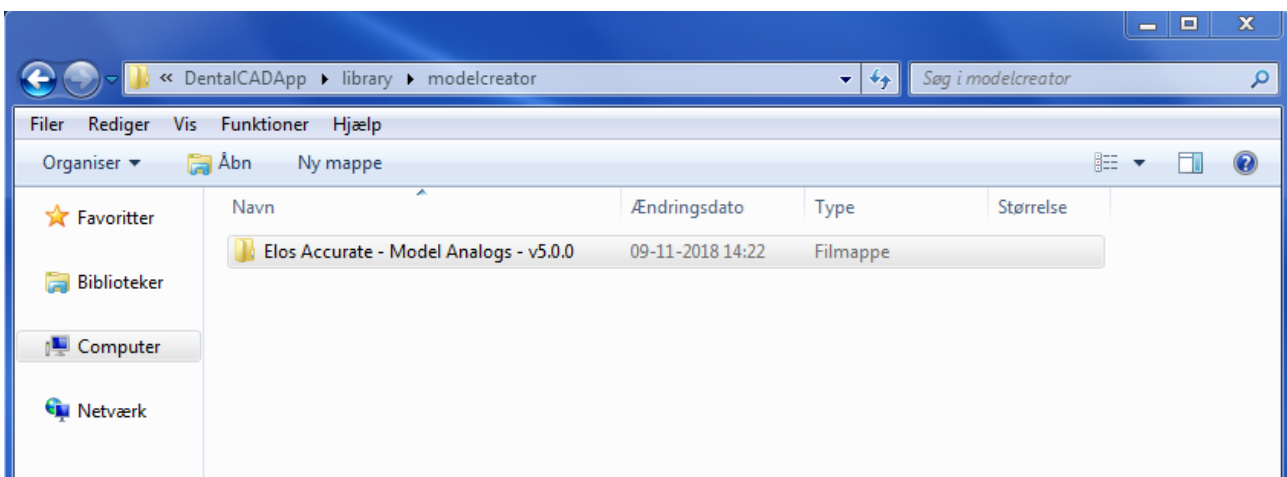
Elos Accurate® Library

Importing the Elos Accurate® Model Analog Library in to exocad

The same procedure is required for the Model Analog Library. Locate the download library and unzip the Elos Accurate – Model Analog folder.



Copy the ELOS_Accurate-LabAnalogs folder and place it in the **“exocad-DentalCAD\DentalCADApp\library\modelcreator\implants”**



Installation of Elos Accurate Libraries into exocad is completed and the new libraries are ready to use.